

Concert Bb Blues

(For: Walking Bass)

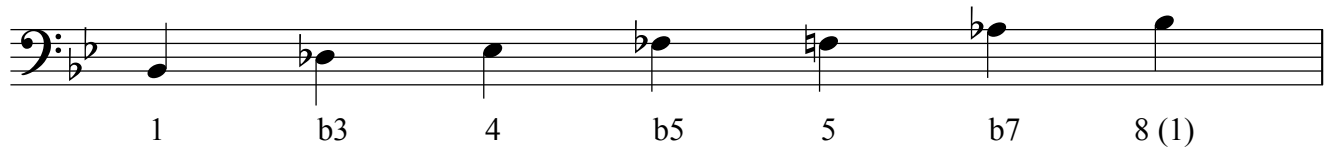
Scale steps-Every note of any scale has a number.

The first note of any scale is ALWAYS #1. The others follow in order.



For soloing, the **MOST IMPORTANT** notes of any given scale are 1, 3, 5, and 7.
The half notes above would build a Bb7 chord.

You can also use the notes of a **BLUES SCALE** to solo. You can build a blues scale in ANY key by using steps 1, b3, 4, b5, 5, and b7. Here it is in your key of Bb.



In your key of Bb, the 3rd, 5th, and 7th note (step) is normally natural. In the blues scale, they are lowered 1/2 step. **REMEMBER**: lowering a 1/2 step means flattening a natural note, (ex. D to Db), or making a sharp note natural, (ex. F# to F natural).

The 12-bar blues is a simple song form that follows a set pattern of chords. Once you have the pattern down, you can vary it a little to make it more interesting.

For bass players, the first thing you must do is develop a good "walking" sound. Nice, even, legato quarter notes that reinforce the root (the bottom note) of the chord and help keep time.

Concert Bb Blues - Variation #1

1 B^b7 2 E^b7 3 B^b7 4 B^b7
5 E^b7 6 E^b7 7 B^b7 8 B^b7
9 F⁷ 10 E^b7 11 B^b7 12 B^b7

Concert Bb Blues - pg. 2

(For: Walking Bass)

Once you develop some finger strength, it's time to start walking around to different notes. We're still staying on the root note for beat one of each measure.

Concert Bb Blues - Variation #2

Musical notation for Variation #2, measures 1-12. The key signature is Bb (two flats) and the time signature is 4/4. The notation is in bass clef. The notes are: 1: Bb, 2: Eb, 3: Bb, 4: Bb, 5: Eb, 6: Eb, 7: Bb, 8: Bb, 9: F, 10: Eb, 11: Bb, 12: Bb.

Here is one more variation. It's OK to mix up the patterns and experiment with other notes. We're still staying on the root note for beat one of each measure.

Concert Bb Blues - Variation #3

Musical notation for Variation #3, measures 1-12. The key signature is Bb (two flats) and the time signature is 4/4. The notation is in bass clef. The notes are: 1: Bb, 2: Eb, 3: Bb, 4: Bb, 5: Eb, 6: Eb, 7: Bb, 8: Bb, 9: F, 10: Eb, 11: Bb, 12: Bb.